

# **St. James's Linear Park - Phase 2**

September 2022

St. James’s Linear Park - Phase 2

Per previous communication, Parks, Landscape & Biodiversity Services intend to implement phase 2 of the Linear park, the section between Basin View and the LUAS tracks, in early 2023.

Three consultation events took place during the summer of 2022 to review the concept option; online on May 19th and 24th and at the F2 centre on June 13th.

These works aim to add amenity value to this section of the park by working carefully with this natural environment to create space for play, small gatherings, exercise, edible planting and refuge.

The site has significant historical value, once the route for the Grand Canal Main Line and adjacent to the City Basin where residents once gathered for respite on the waterside.

Before work commences, a pre-development archaeological assessment and test excavation will be conducted to ascertain the nature and extent of any archaeological deposits associated with the canal and City Basin so that these features are protected during construction.

As part of this survey, the wall of the canal will be located so that sections of the remnants can be revealed or marked as part of the works as a visual reminder of the sites history.

This plan responds to the feedback received from residents as much as is feasible within the site’s limitations.

The works will include:

- Additional tree planting and diverse, shrub, grass and perennial planting that will build on and support the existing seed bed to flower.
- Formal and informal seating
- Playful landscape to encourage meandering, running, jumping and balancing across the site, up and down the informal steps, mounds and on more formal play objects.
- Accessible callisthenic equipment
- An edible garden that will be planted with fruit trees and edible plants. Interested residents and local schools will be invited to join in planting, establishment and development starting in November ’23 with Suzie Cahn from Carraig Dulra organic and permaculture Farm. Invitation to follow.

Lighting options will be developed in collaboration with DCC lighting.

The proposed works may be updated as necessary to meet guidance in the archaeological assessment.



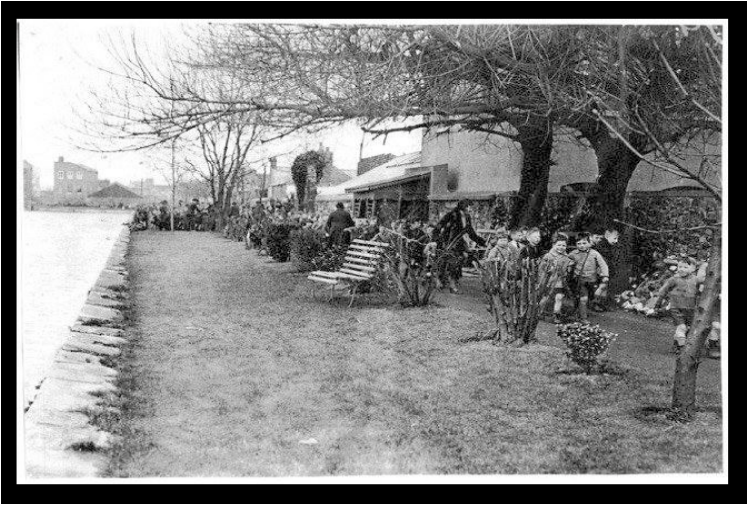
RED LINE BOUNDARY



CONSULTATION INVITE



SITE LOCATION. MAP FADEN 1797





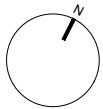


LEGEND

- Site boundary
- High friction double dressed - 5-8mm / Hoggins path  
2% fall directing to french drain on south side
- Entrance Paving
- Yellow Portuguese Granite Kerb - installed Flush with adjacent surface Allow for cutting.  
See 075-DCC-L-D-1\_Groundplain\_Edges
- French drain to footpath edge
- School boundary wall
- Concrete footpath- outside project scope
- Historical canal boundary - revealed where feasible -  
See archaeological report
- Seating - Athens from Area France
- Edible garden
- Herbaceous
- Meadow - with herbaceous & bulbs
- Proposed Trees
- Existing Trees

PARK STRUCTURES

- Feature Entrance sculpture - TBC
- Large Turning Stone
- Balancing Disk
- Rotating beam
- French Triple Push Up Bar
- Para equipment Parallel Bars
- Stepping Logs
- Climbing Forest
- Stainless steel slide
- 6m long table







Proposed visual, view east

# Reference images

